

Festival of Hope Sponsor Agreement

Our company would like to participate in the Festival of Hope by donating the following:

- Local Presenting Level\$25,000
 Gold Sponsor Level \$5,000
 Silver Sponsor Level \$2,500
 Bronze Sponsor Level \$1,000
 I would like to offer an in-kind donation of (be specific):

Approximate value of in-kind donation \$ _____

Our company is interested in having a team. Please have a representative of Festival of Hope contact us.

Company Name _____

Contact Person _____

Mailing Address _____

E-Mail Address _____

Phone Number _____

Return form by January 15, 2010, to:

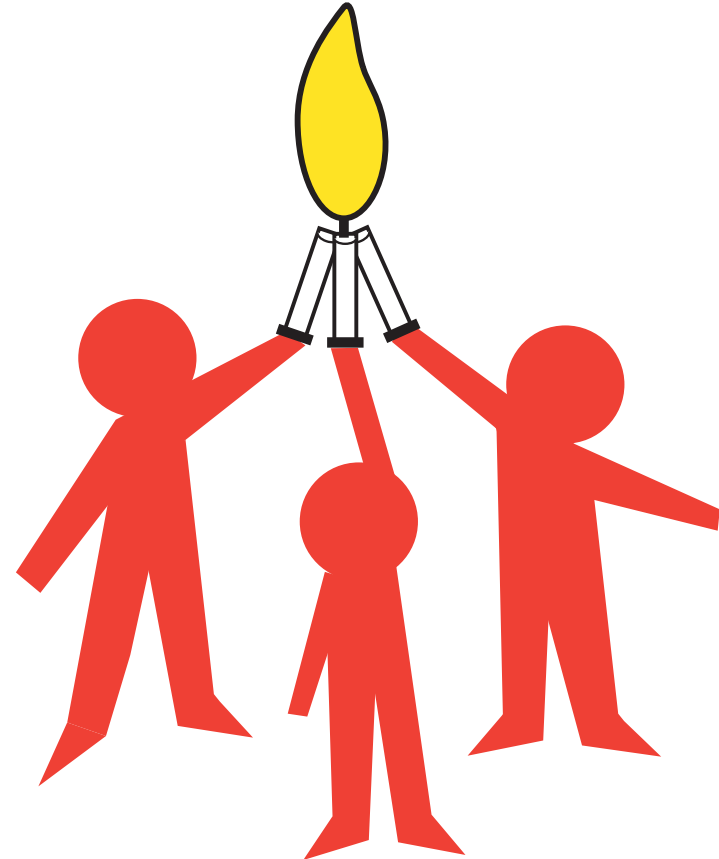
Project Hope

P.O. Box 4236 • Tupelo, MS 38803-4236

Fax: (662) 377-2374 • Phone: (662) 377-3867

Website: www.projecthopems.com

PROJECT



HOPE

**Sponsorship
Opportunities**

**Festival of Hope 2010
Fun in HOPEville**

How can you get involved with the 2010 Festival of Hope?

Sponsor Levels

Local Presenting Sponsor\$25,000

- Logo at the highest level on Festival T-shirt, all printed material, Festival banner, website, on air recognition in all television and radio advertising
- On-stage recognition at event
- Category exclusivity within like industry
- Company official may assist with welcome ceremony at event

Gold Sponsor\$5,000

- Logo on Festival T-shirt, all printed material, Festival banner, website, on air recognition in all television and radio advertising

Silver Sponsor.....\$2,500

- Logo on Festival T-shirt, all printed material and Festival banner

Bronze Sponsor.....\$1,000

- Logo on Festival T-shirt and Festival banner

What is Project Hope?

Project Hope is a community health initiative dedicated to educating our community to promote healthy lifestyles. The focus is on improving the health status of our community.

Mississippi ranks 50th in the nation in regard to health status. Heart disease and cancer are the leading causes of death in the United States. With diabetes being a risk factor for both, these three diseases are the target areas for Project Hope. Those individuals who have been diagnosed with any of these devastating illnesses will be the primary recipients of assistance through this initiative. However, Project Hope will also target all those at risk through prevention, education, intervention and research for cure.

Under the auspices of the CREATE Foundation, Project Hope is “neighbors helping neighbors.”

Festival of Hope is the primary fundraiser for Project Hope. Since its inception in 1999, Festival of Hope has raised more than \$702,000 for Project Hope to donate to local cancer, heart disease and diabetes patients. Project Hope also has an endowment fund through the CREATE Foundation to help provide continuing education resources for health care professionals.